

Grinding & Dispersing

Process and Plant Engineering Services

Your Vision - our solution



our technology
YOUR SUCCESS

Process and Plant Engineering Services



To design a world-class plant you need a very scarce resource!

Engineers with specialized knowledge, who are up-to-date with the latest technologies. People who bring to the table best-in-class solutions for the engineering challenges you face. Perhaps you need a turnkey solution, or you need help to improve plant efficiency, throughput

or reliability. At NETZSCH we have the expertise, resources and methodologies to solve your toughest problems. That's why many of today's leading companies benefit from the skills and experience we can offer and choose us to engineer their processes and plants.



Well Engineered Solutions

Project Definition

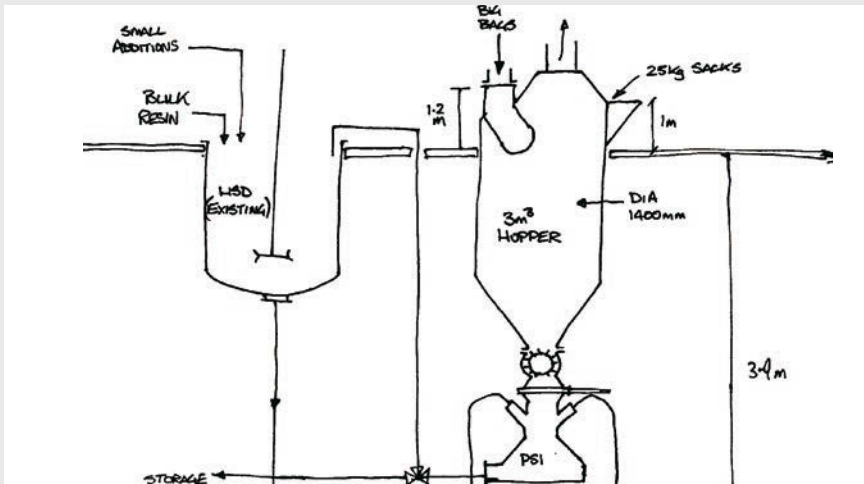
We'll work closely with you to define the feasibility and scope of any project, helping you to understand what's possible and to find the best solutions to meet your objectives.

- Feasibility and concept studies
- Throughput and efficiency calculations
- Cost and profitability calculations
- Timescale and resource planning
- Turnkey solution, plant upgrade and modernization solutions

Process Design

Our engineers help to develop innovative and efficient processes that give you a competitive edge and efficient, reliable and predictable manufacturing.

- Knowledgeable engineers
- Using the latest technologies
- Exploiting the knowledge gained from hundreds of applications across many industries
- Leverage expertise from across the NETZSCH Group worldwide



For Higher Plant Efficiency and Reliability

Plant Engineering

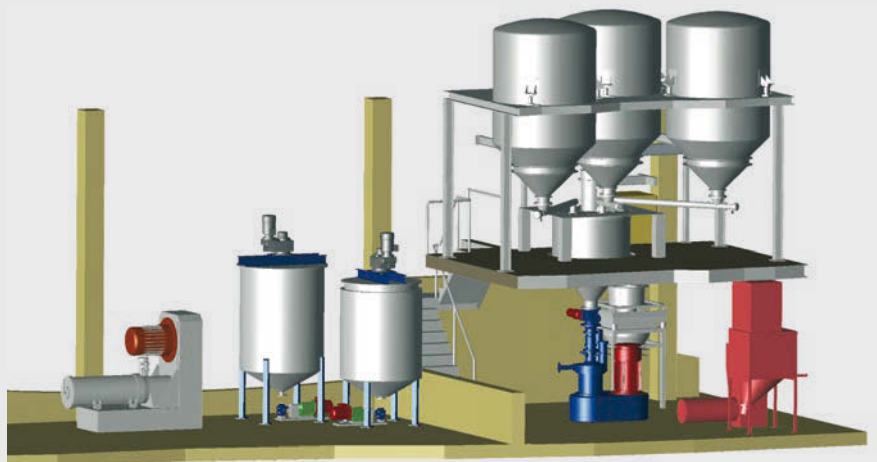
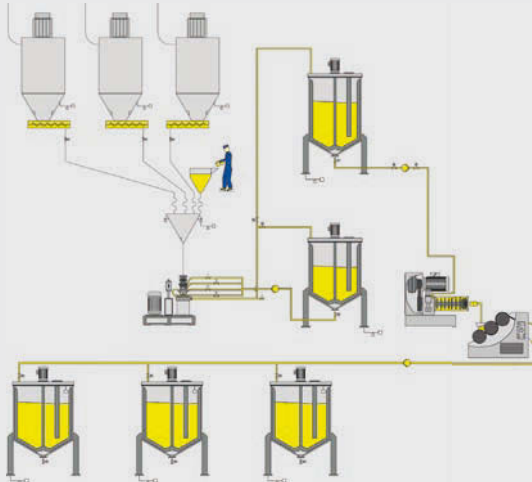
Whether it is a turnkey solution you need or help on a particular aspect of the plant engineering, we have the know-how. NETZSCH has been engineering manufacturing plants for over 100 years, using state-of-the-art production equipment and manufacturing techniques. We undertake projects for companies around the world.

- Plant design
- Process monitoring, control and automation
- Software development and real time application programming
- Mechanical engineering
- Electrical engineering
- Steelwork design
- Abatement systems
- Machinery and vessel manufacturing
- Extraction systems

Project Management

From start to finish, you can rely on professional and exacting project management. At NETZSCH we have the resources and capability to oversee the entire project, even the most complex. Always with a total commitment to maintaining the highest standards.

- Project Planning
- Health and safety expertise including, full working experience of Atex 94/9 and Atex 100a
- Construction site supervision and management
- Machinery installation
- Installation and testing of instrumentation and control systems
- Machinery and plant commissioning
- Employee training
- Support throughout production ramp-up



Quality and Output Guaranteed

Best Available Technology

At NETZSCH we believe in engineering the best possible solution for our customers, which is why we will evaluate and select the best available technology for your application - not just our own. The result - you get the most efficient and reliable plant, we get to keep our reputation and our customers' trust.

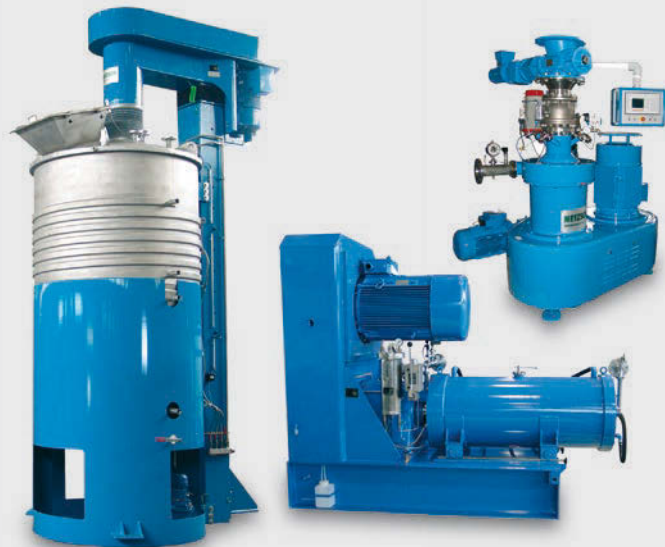
Plant Performance Guaranteed

Plant engineering shouldn't be unpredictable. At NETZSCH labs in Germany, USA and Japan we can validate the engineered solution prior to installation, conducting downscale trials of the process design and selected equipment. Because we validate the engineered solution and optimize the plant's performance and reliability, we will guarantee it, too.

Customer Service

Our commitment to you doesn't end with the project. There are over 50 NETZSCH service centers located around the world, so we will always be there to help.

- Global support - around-the-clock
- Staff training
- Replacement parts
- Problem diagnostic services
- Servicing and plant maintenance
- Plant efficiency and performance analysis
- Plant overhaul and replacement



References

Can we help you?

We provide process and plant engineering services for many companies across a wide range of industries and applications. Whatever your project is, we probably have the first hand experience and skills you need.

- | | |
|---------------------------------------|-----------------------------|
| ■ Technical Ceramics | ■ Printing Inks |
| ■ Nanotechnologies | ■ Cosmetics |
| ■ Pharmaceuticals | ■ Sealants and Adhesives |
| ■ Hard Metals (Tungsten Carbide, SiC) | ■ General Chemicals |
| ■ Paints | ■ Chocolate / Confectionary |
| ■ Catalysts and Fuel Cells | ■ Agro Chemicals |



NC/PU Solvent based Packaging Ink Plant



Publication Gravure Ink Plant



Heatset Ink Plant



CaCO₃-Plant



Compounds-Plant

The World's Leading Grinding Technology

The Companies of the Grinding & Dispersing Business Unit

NETZSCH-Feinmahltechnik GmbH, Selb, Germany

NETZSCH-CONDUX Mahltechnik GmbH, Hanau, Germany

NETZSCH Premier Technologies, LLC., Exton PA, USA

NETZSCH Indústria e Comércio de Equipamentos de Moagem Ltda., Pomerode, Brazil

NETZSCH (Shanghai) Machinery and Instruments Co., Ltd., Shanghai, China

NETZSCH Mastermix Ltd., Lichfield, Great Britain

NETZSCH España, S.A., Terrassa/Barcelona, Spain

ZAO NETZSCH Tula, Tula, Russia

The Business Unit Grinding & Dispersing is part of the NETZSCH Group.

The NETZSCH Group is a mid-sized, family-owned German company engaging in the manufacture of machinery and instrumentation with worldwide production, sales, and service branches.

The three Business Units – Analyzing & Testing, Grinding & Dispersing and Pumps & Systems – provide tailored solutions for highest-level needs. Over 2 700 employees at 140 sales and production centers in 27 countries across the globe guarantee that expert service is never far from our customers.

NETZSCH-Feinmahltechnik GmbH
Sedanstraße 70
95100 Selb
Germany
Tel.: +49 9287 797-0
Fax: +49 9287 797 149
info.nft@netzsch.com

www.netzsch.com