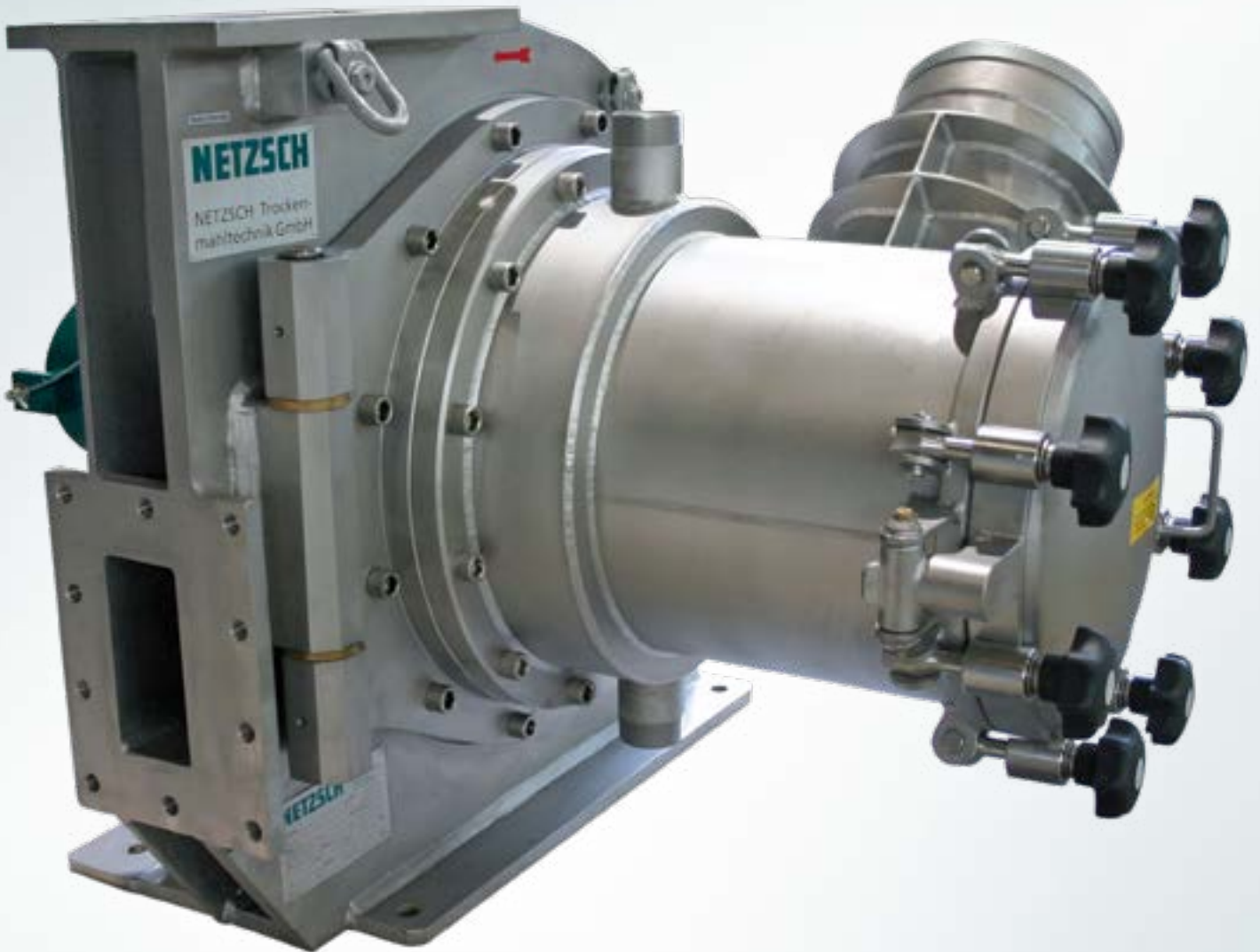


# NETZSCH

Proven Excellence.



## NETZSCH High-Performance Fine Classifier *INLINESTAR*

A Genuine Inline-Classifier

Business Unit  
GRINDING & DISPERSING

# Compact and Simple

Even the most challenging classifying jobs can be solved efficiently and economically with the NETZSCH *INLINESTAR*.

Developed to produce finest cut points in a range down to  $d_{97}$  2.6  $\mu\text{m}$  (based on limestone), this high-performance air classifier can now be used successfully to complete grinding plants. Excellent sharpness of cut and a very selective product guiding are the essential characteristics of the new *INLINESTAR*. With the *CONVOR*<sup>®</sup> classifier wheel, which features constant radial speeds inside the wheel, ranges of fineness can be obtained, which were not previously possible with other inline classifiers on the market. This optimized classifier wheel design ensures that very high finenesses can also be obtained using only one classifier wheel even with high throughput capacities.

The screw-shaped housing optimizes the product flow within the device. In this way, large amounts of coarse product can leave the product discharge unhindered! Accessibility and easy cleaning of the machine are guaranteed due to the swing-out housing door.

For the processing of dust-explosive hazardous products the machine- and plant execution in pressure-shock resistant version [up to 10 bar (g)] is the usual option. The choice of material can be made to suit the particular requirements of the product to be processed. Mild steel as well as rust- and acid-proof materials are standard.



NETZSCH High Performance Fine Classifier  
*INLINESTAR*

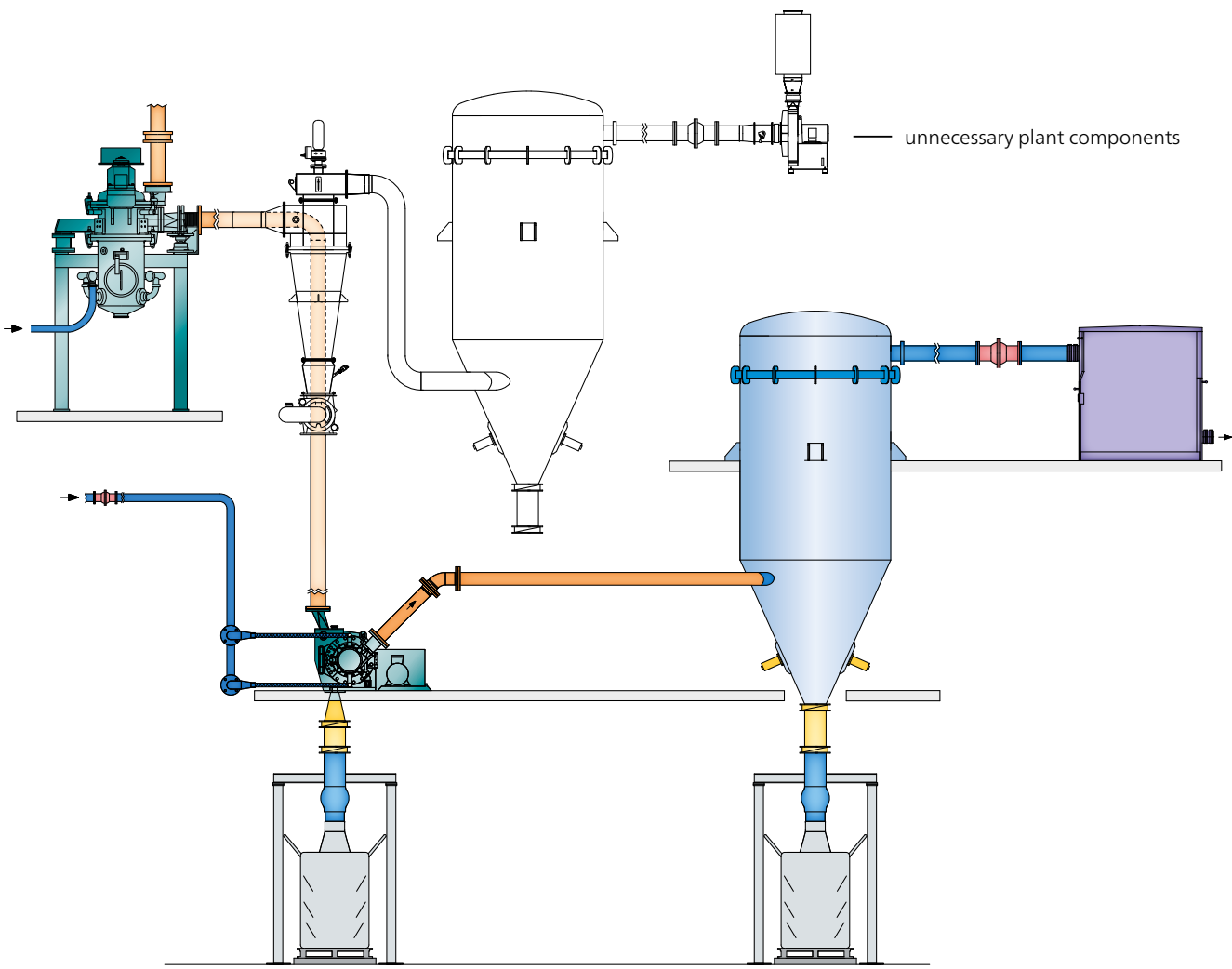
The combination of a fine-grinding mill with a downstream air classifier is essential for many product applications. Typical applications for 2-stage grinding/classifying plants are the dedusting of preground powders, meaning the removal of undesired ultra-fine fractions, as well as the separating out of coarse particles or grit. Until now, the expense for the necessary plant components was quite high, at least when the best possible product quality was to be achieved.

With the *INLINESTAR* developed by NETZSCH Trockenmahltechnik GmbH, this expense can be reduced significantly! An intermediate separation of the product after grinding is no longer necessary. Once the air volumes have been balanced, the ground material can be fed directly into the high-performance classifier.

The *INLINESTAR*, the only true inline classifier on the market, is available for testing in our laboratory.

## Your Advantage is Our Focus

- Lower Investment Costs
  - Fewer plant components
  - Less space required
- Lower Operating Costs
  - Lower total air amount
  - Lower total energy
- Easier To Operate
  - Easy to clean
  - Easier product change
  - Improved accessibility
- Highest Product Quality
  - Best range of separation
  - Maximum product utilization



Grinding-Classifying plant with *INLINESTAR* and upstream Fluidized Bed Jet Mill CGS in pressure-shock resistant execution

The owner-managed NETZSCH Group is a leading global technology company specializing in mechanical, plant and instrument engineering.

Under the management of Erich NETZSCH B.V. & Co. Holding KG, the company consists of the three business units Analyzing & Testing, Grinding & Dispersing and Pumps & Systems, which are geared towards specific industries and products. A worldwide sales and service network has guaranteed customer proximity and competent service since 1873.

# Proven Excellence.

## Business Unit Grinding & Dispersing – The World’s Leading Grinding Technology

NETZSCH-Feinmahltechnik | Germany  
NETZSCH Trockenmahltechnik | Germany  
NETZSCH Vakumix | Germany  
NETZSCH Lohnmahltechnik | Germany  
NETZSCH Feinmahltechnik Polska | Poland  
NETZSCH Mastermix | Great Britain  
NETZSCH Broyage | France

NETZSCH España | Spain  
NETZSCH Machinery and Instruments | China  
NETZSCH India Grinding & Dispersing | India  
NETZSCH Tula | Russia  
NETZSCH Makine Sanayi ve Ticaret | Turkey  
NETZSCH Premier Technologies | USA  
NETZSCH Equipamentos de Moagem | Brazil

NETZSCH Trockenmahltechnik GmbH  
Rodenbacher Chaussee 1  
63457 Hanau  
Germany  
Tel.: +49 6181 506 01  
Fax: +49 6181 571 270  
info.ntt@netzsch.com



**NETZSCH**®

[www.netzsch.com](http://www.netzsch.com)