

**NETZSCH**

Proven Excellence.

**UP**

**UPGRADE**



**NETZSCH** *PREMIUM GRAPHIC CONTROL*

...to lift your machine and plant control to the next level

Business Unit  
GRINDING & DISPERSING

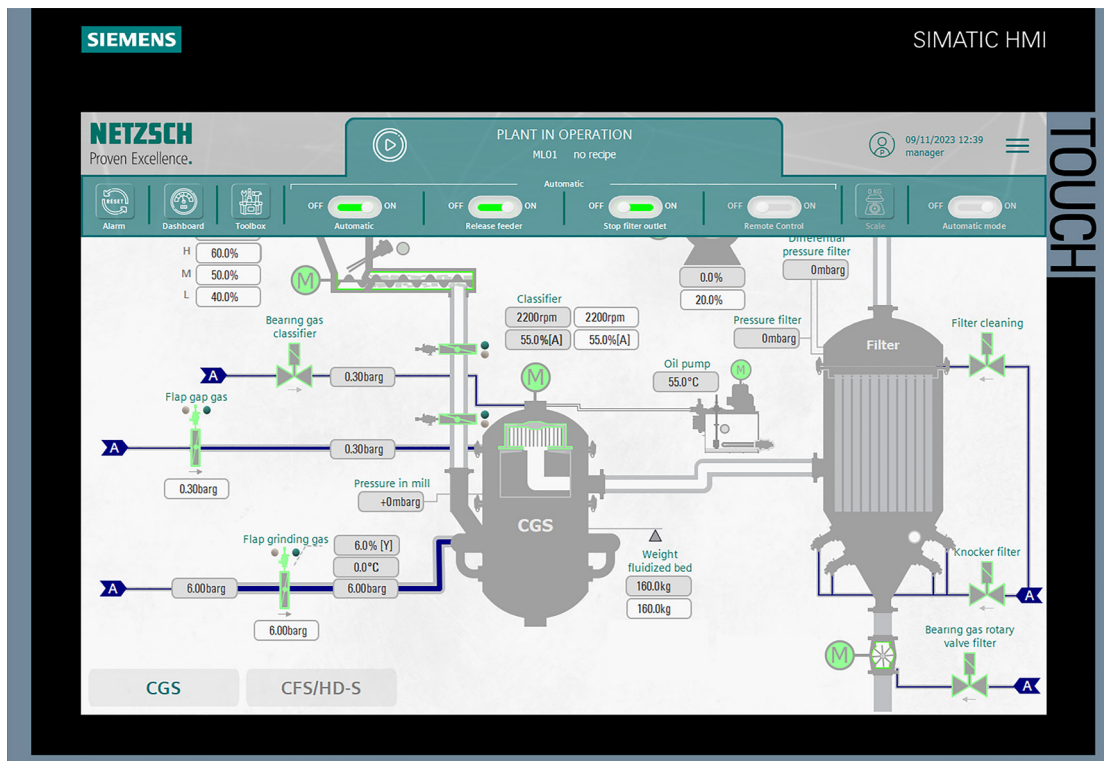
# NETZSCH lifts your machine and plant control

The heart of a NETZSCH plant is a mill or classifier, but without its 'brain' – the associated control system – it would not be able to deliver the desired performance. NETZSCH has now specifically optimized this crucial element and raised it to a new level. The renewed, intuitively designed control system, NETZSCH *PREMIUM GRAPHIC CONTROL*, impresses with its user-friendliness and guarantees optimal process control and monitoring.

## NETZSCH *PREMIUM GRAPHIC CONTROL*

Experience the revolution in process control with NETZSCH *PREMIUM GRAPHIC CONTROL*. The intuitive control system, which is based on the proven Siemens S7-1500 controller and works with the Siemens PLC, gives you unprecedented control and overview of your machines and plants.

Thanks to the responsive Siemens TP1500 comfort HMI panel, which is conveniently and easily controlled via touch operation using a 15-inch widescreen TFT display, interacting with your plant has never been easier. The process visualization allows you to monitor your plant in real time and change parameters and service settings directly in the visualization. With the integrated trend display of the process values, you can track the efficiency of your plant and have a comprehensive overview of all processes at all times.



Process visualization with global control panel

# Control to the next level

The NETZSCH *PREMIUM GRAPHIC CONTROL* offers a main menu that is divided into six main groups for better clarity and user-friendliness:

**Process:** this category deals with all aspects directly related to machine and equipment operations. Process control and management are handled here.

**Analysis:** In this area you will find extensive analysis tools to monitor and optimize plant performance and efficiency. Trends, energy values, plant statistics and motor utilization can be analyzed here.

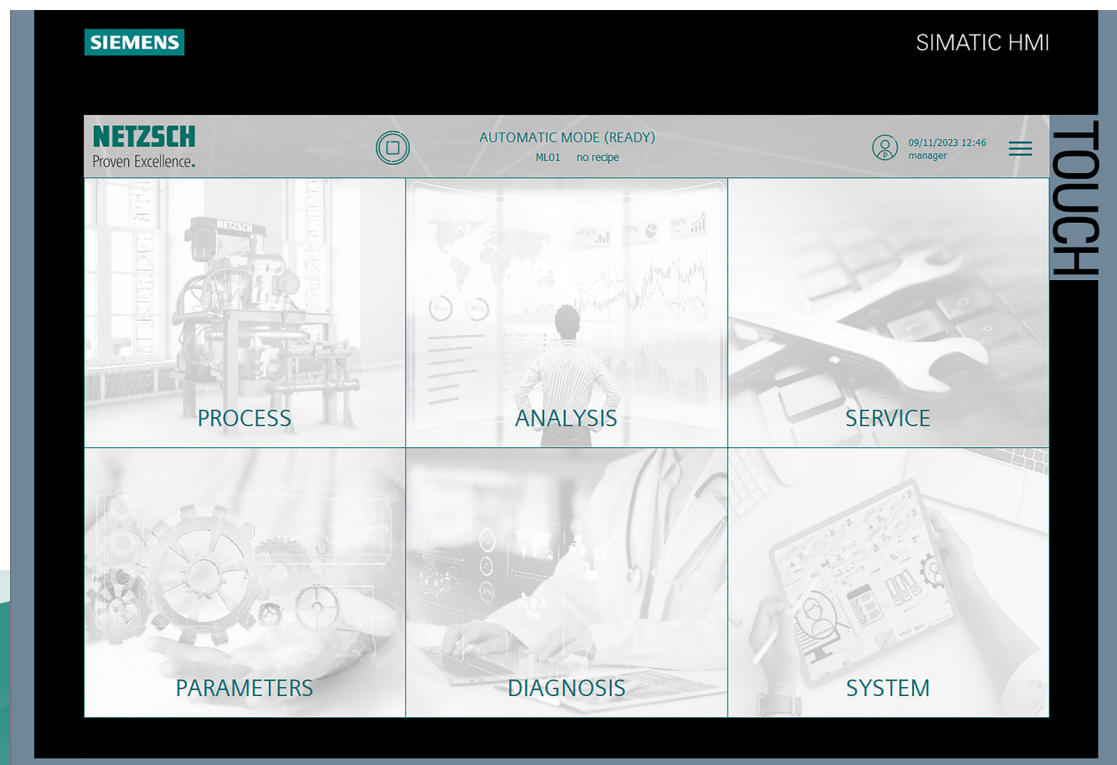
**Service:** This section of the menu provides support for maintenance and repair services. Users can submit support requests, view maintenance logs, and more here.

**Parameters:** In this section, users can set and adjust the parameters of the system. These include, for example, operating parameters such as speed, temperature, pressure, etc.

**Diagnostics:** This category includes troubleshooting and diagnostic tools. They can help identify problems and find solutions to minimize downtime.

**System:** This menu item contains system settings, such as user management, as well as operating system settings and information about the system.

This categorization makes it easier for you to find your way around and efficiently access all the functions and tools you need to manage and optimize your assets.



Clear and user-friendly menu with six main categories

# NETZSCH *PREMIUM GRAPHIC CONTROL*

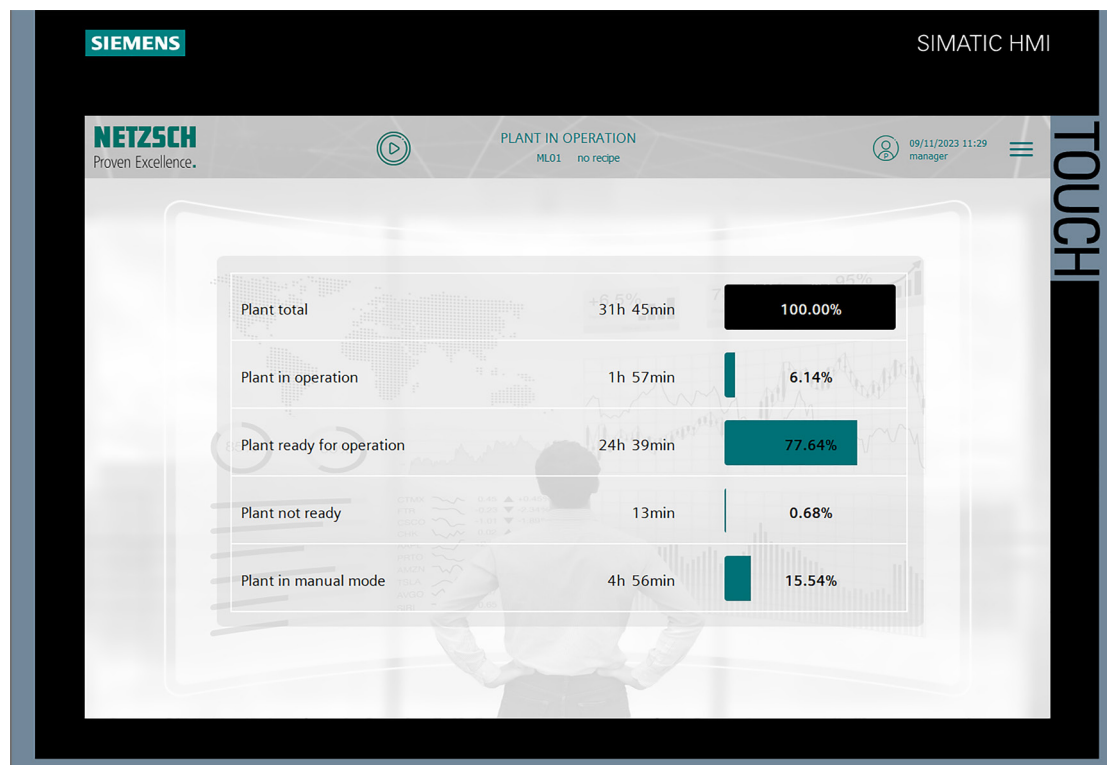
## Safety & Efficiency

Security is paramount, as user management with defined user groups ensures that only authorized users have access to the settings. For service and maintenance work, an intuitive user interface with clear alarm messages and interactive tooltips is available, enabling trouble-free identification and rectification of faults in a short time.

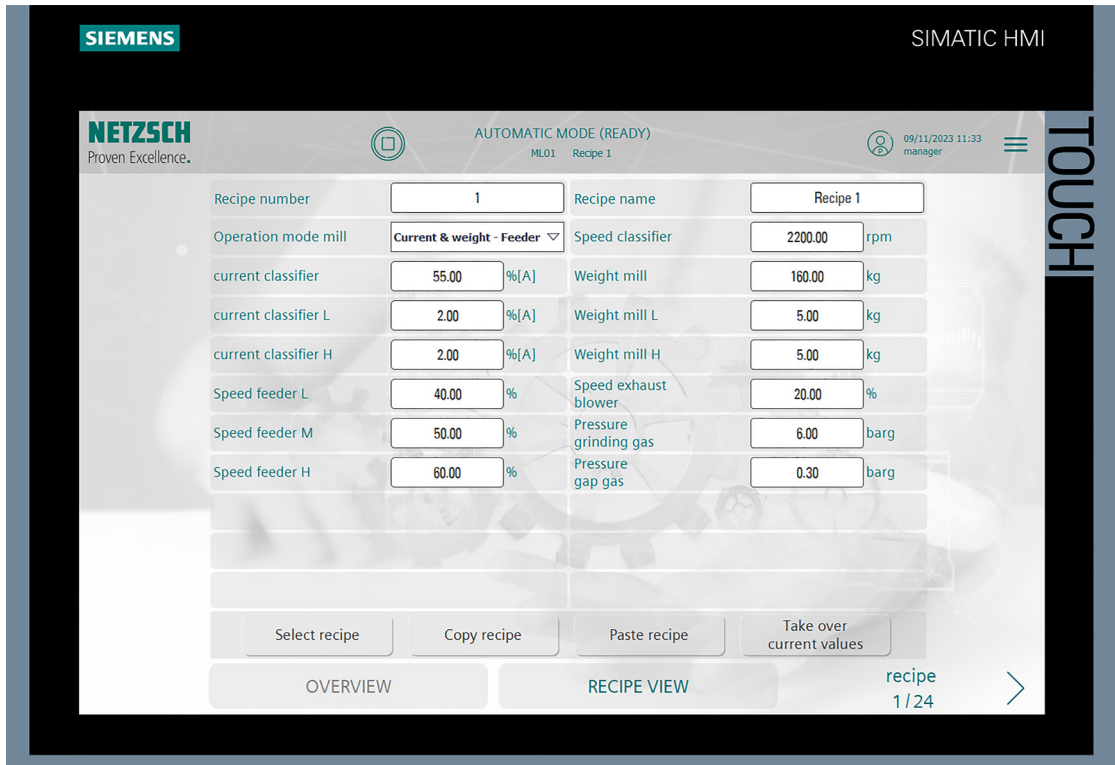
Extensive diagnostic and analysis tools as well as defined performance indicators (KPIs) provide you with detailed information about the performance data of the drives, valves and actuators. In addition, the central energy measurement and calculation ensures transparent energy management and enables optimization in real time.

A highlight of NETZSCH *PREMIUM GRAPHIC CONTROL* is the optional recipe management, which allows you to control up to 24 different recipes. With this function, you can link various process indicators and operating modes to recipe values and thus achieve highly precise, automated control of your processes.

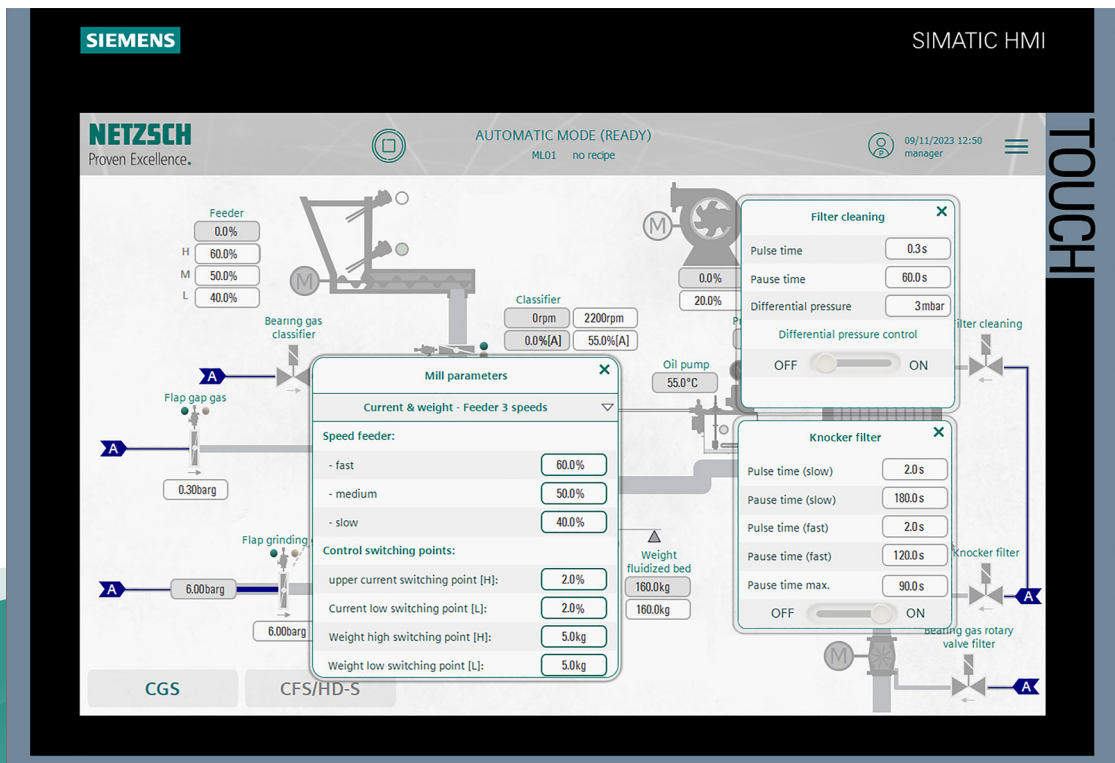
Discover the future of process control with NETZSCH *PREMIUM GRAPHIC CONTROL* and optimize your production to a new level of efficiency and precision.



Analysis Screen



Recipe management



Process Screen - Detail View

# NETZSCH *PREMIUM GRAPHIC CONTROL*

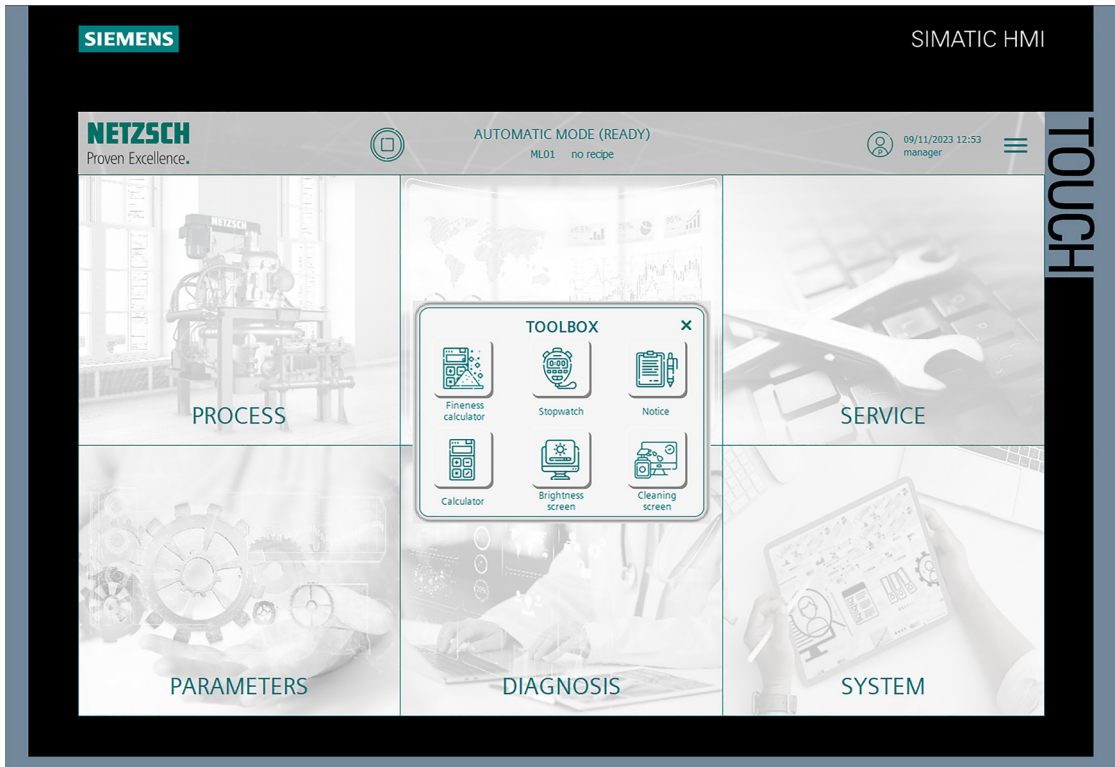
## Full control – at a glance

The "Global Header" provides the operator with an overview of the current status of the plant at all times on every page of the operator panel and enables him to react immediately if necessary. The combination of status information in the header with the controls in the operator panel ensures that all necessary information and control mechanisms are available to the operator at all times.

In addition, the global header is designed to respond to faults and warnings. When faults occur, it changes color to red, and when warnings occur, it changes to yellow. In this way, the operator receives immediate visual feedback on the status of the plant and can react accordingly.

## Your advantages with NETZSCH *PREMIUM GRAPHIC CONTROL*


- Reliable control for optimal, reproducible processes
- Easy operability via a large 15" touch panel
- Realistic visualization for a better overview and control of your process
- Step chain view for clear display and definition of the correct sequence of start and stop steps of the plant's actuators
- Process monitoring and evaluation based on defined KPI's
- Measurement of energy consumption for systematic energy management according to DIN EN ISO 50001
- Extensive analysis and diagnostic tools for monitoring and optimizing your process and better planning of cleaning and maintenance intervals
- Globally available toolbox with useful functions such as fineness calculator, stopwatch, ...
- Optional recipe management for controlling 24 recipes (with parameters such as speed, dosing capacity, grinding air pressure and process switching points)
- User access with defined authorizations
- Integrated document management (operator manual, EPLAN project, P&ID)
- ONE TIA project ONE customer application



Toolbox



Monitoring and optimizing of maintenance intervals



The NETZSCH Group is an owner-managed, international technology company with headquarters in Germany. The Business Units Analyzing & Testing, Grinding & Dispersing and Pumps & Systems represent customized solutions at the highest level. More than 4,000 employees in 36 countries and a worldwide sales and service network ensure customer proximity and competent service.

Our performance standards are high. We promise our customers Proven Excellence – exceptional performance in everything we do, proven time and again since 1873.

## Proven Excellence. ■

### Business Unit Grinding & Dispersing – The World's Leading Grinding Technology

NETZSCH-Feinmahltechnik – Germany  
NETZSCH Trockenmahltechnik – Germany  
NETZSCH Vakumix – Germany  
NETZSCH Lohnmahltechnik – Germany  
NETZSCH Mastermix – Great Britain  
NETZSCH FRÈRES – France  
NETZSCH España – Spain  
ECUTEK – Spain

NETZSCH Machinery and Instruments – China  
NETZSCH India Grinding & Dispersing – India  
NETZSCH Tula – Russia  
NETZSCH Makine Sanayi ve Ticaret – Turkey  
NETZSCH Korea – Korea  
NETZSCH Premier Technologies – USA  
NETZSCH Equipamentos de Moagem – Brazil

NETZSCH Trockenmahltechnik GmbH  
Rodenbacher Chaussee 1  
63457 Hanau  
Germany  
Tel.: +49 6181 506 01  
Fax: +49 6181 571 270  
info.ntt@netsch.com

**NETZSCH®**

[www.netsch.com](http://www.netsch.com)