



What can you expect from us?

- Transparent and open consultation
- Professional and quick solution for your product
- State-of-the-art machines and systems
- Metal-free and low-contamination material designs
- ATEX certified production
- Competent, comprehensive and global support from a single source

The owner-managed NETZSCH Group is a leading global technology company specializing in mechanical, plant and instrument engineering.

Under the management of Erich NETZSCH B.V. & Co. Holding KG, the company consists of the three business units Analyzing & Testing, Grinding & Dispersing and Pumps & Systems, which are geared towards specific industries and products. A worldwide sales and service network has guaranteed customer proximity and competent service since 1873.



What benefits do you have from our service?

- No capital commitment
- No investment of your own
- Flexible and with a calculable risk through the market-introduction phase
- Planning reliability for your decision-making processes
- Bridging of capacity bottlenecks
- Product development support



Sustainability

- ISO 14001
- ISO 9001
- EcoVadis Bronze

Proven Excellence.

NETZSCH
Lohmahltechnik GmbH
Max-Fischer-Straße 20b
86399 Bobingen

Tel.: +49 8234 966 150
Fax: +49 8234 966 1570

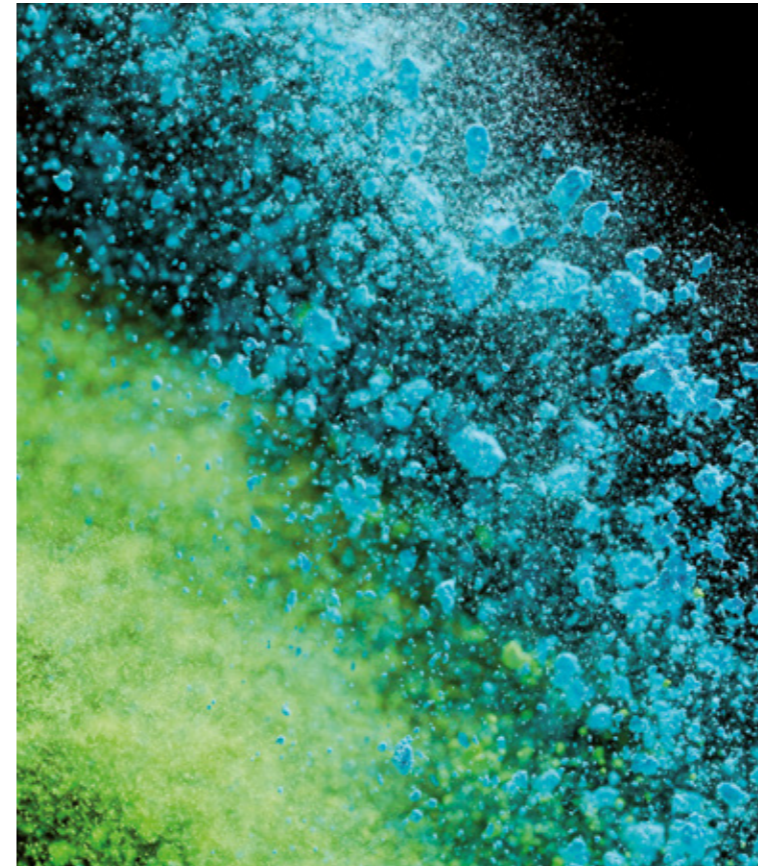
info.nlt@netzsch.com
grinding.netzsch.com



G&D · NETZSCH Lohmahltechnik · EN · 02/26 · Technical specifications are subject to change.

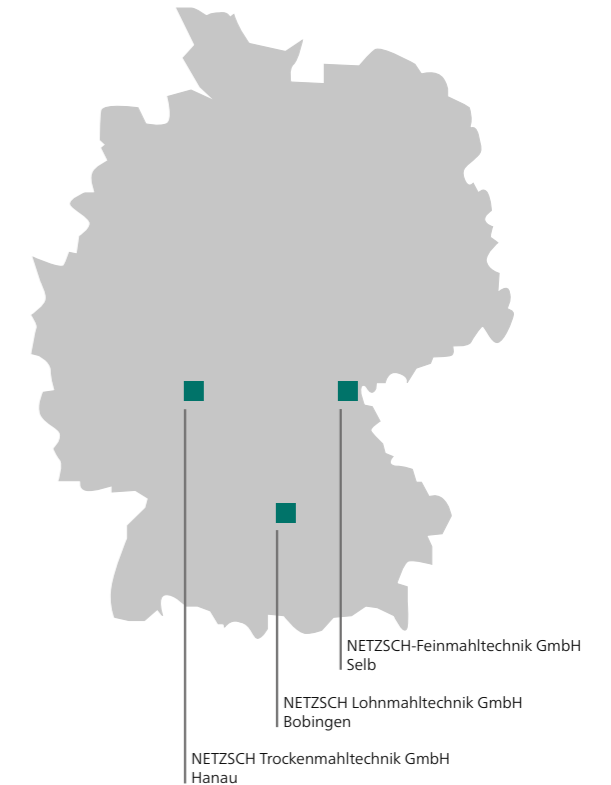
Dry & Wet Grinding as a Service

NETZSCH Lohnmahltechnik



Toll Grinding at NETZSCH

NETZSCH is the only service provider in the market capable of offering the entire range of applications, from dry to wet size reduction, including dispersing, all from a single source.

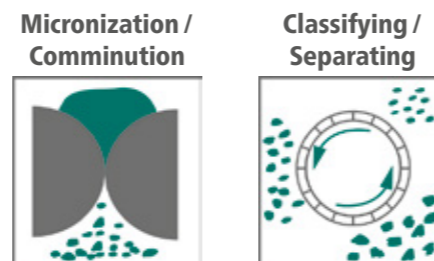


Your product is in the best hands with us

Dry Processing at NETZSCH

Benefit from our many years of experience in dry processing as a service provider. We offer you comprehensive expertise from a single source. From demanding grinding and classifying tasks to specialized services such as cryogenic grinding, as well as packaging and labeling – you are in the right place with us.

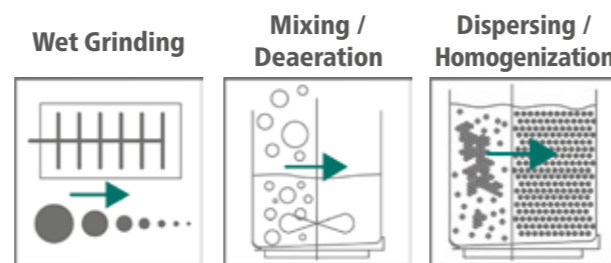
Dry Processing



Wet Processing at NETZSCH

In the field of wet processing, we offer toll grinding services for products from a wide range of industries. Aqueous or solvent-based suspensions, highly viscous pastes or emulsions, as well as the incorporation of solids into liquids, we are able to meet virtually any requirement in wet processing for you, based on many years of experience and in-depth process expertise.

Wet Processing



Quality Control & Shipping

Our sites, equipped with state-of-the-art equipment and analytical methods, provide optimal conditions for successful testing and development. We then implement these together with you on our broad range of production-scale machines. Throughout all processes, we place the highest emphasis on quality. Our operations are certified in accordance with DIN/ISO 9001 and 14001.

Quality Control / Shipping

