

**NETZSCH**

Proven Excellence.



**N**otify

NETZSCH *NOTIFY*

NEW WAYS for Digital and Transparent Production

Business Unit  
GRINDING & DISPERSING

We're with you on the path to digital  
and transparent production

NEW WAYS



TRANS

SECURITY



PLUG & PLAY



INTUITIVE



REAL TIME



TRANSPARENCY



NOTIFICATIONS



DATA  
ANALYSIS



ANY DEVICE

**N**otify

# NETZSCH *NOTIFY*

## for digital and transparent production

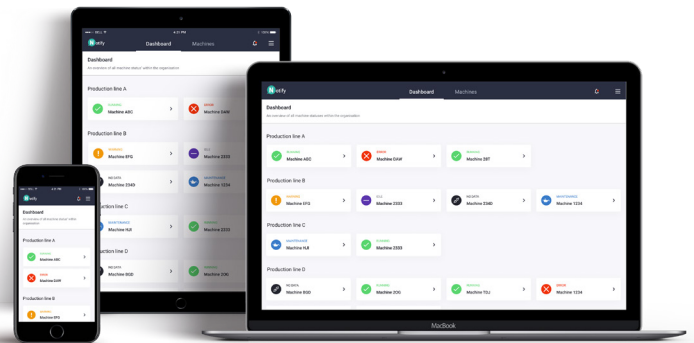
*NOTIFY* is a software product that enables "real time monitoring" of machine and process variables, i.e. a display in real time, on a computer, cell phone or tablet.

*NOTIFY* is independent of the operating system of the end device. The basic requirement is an internet connection and a corresponding connection to the machine via a gateway, accessible from the most popular web browsers. Which is already available on NETZSCH machines with the state-of-the-art *IRIS* control system.

With *NOTIFY*, the operator or production manager can obtain an overview of the operating status of the machine at any time from anywhere. With the appropriate authorization, threshold values or limit values can be specified that define a critical operating state. *NOTIFY* then sends "notifications" to a defined group of recipients so that the machine operator can intervene in the process before a shutdown occurs or the product is damaged and economic loss results.

Additional modules for data acquisition, storage and data processing as well as for machine learning or remote control will enhance *NOTIFY* in the future.

*NOTIFY* thus makes a direct contribution to increasing process and operational reliability. In addition, downtimes and waste are avoided. Process managers can concentrate on other processes, since *NOTIFY* informs them before or when intervention in the process becomes necessary.



## YOUR ADVANTAGES

- Less waste (raw materials)
- Fewer operators required per machine
- Less downtime due to faster maintenance response times
- Improved performance due to data analysis
- More transparency regarding machine activities
- Less damage to machines and breakdowns, etc.

## *NOTIFY* for your new machine

The NETZSCH *IRIS* control system is required for the use of the *NOTIFY* software.

PACK 1	
Used with	SIEMENS PLC with Ethernet port
Device	Embedded in the <i>IRIS</i> control panel
Monitoring	Software-based solution

## Security at the highest level



Data delivery is encrypted and secured by TLS (Transport Layer Security) and username- and password-protected.



Data can only be accessed by authenticated users and only over a secure connection (HTTPS).



Data are stored on AWS servers, the security of which is reliably managed by Amazon Webservises. AWS is ISO/IEC 27001: 2013, 27017: 2015, 27018: 2019, 9001: 2015 and CSA STAR CCM v3.0.1 certified.



Our product complies with the latest EU data protection regulations and is GDPR compliant. In addition, passwords are stored only in encrypted form.

## NOTIFY for your used or existing machine

Regardless of whether your company is involved in a complete Brownfield project or just wants to create transparency for certain machines, *NOTIFY* also offers retrofit packages to adapt your current automation to the IoT (Internet of Things) environment. The *NOTIFY* gateway manages the connection to the SIEMENS PLC (Programmable Logic Controller) and encrypts the data using secure transport protocols that can be accessed only by registered users in any organization. Both hardware packages are internationally certified and can easily be installed on the machine's control cabinet.

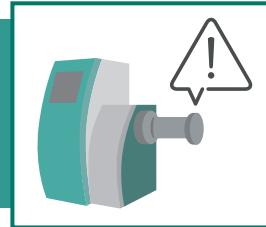
	PACK 2	PACK 3
<b>Used with</b>	SIEMENS PLC with Ethernet port	SIEMENS PLC without Ethernet port
<b>Device</b>	Configured IoT gateway	Configured IoT gateway + Serial-to-Ethernet converter
<b>Monitoring</b>	One gateway for up to five mills on the same network	One gateway for up to five mills on the same network One Serial-to-Ethernet converter via PLC

## APPLICATION EXAMPLE - CASE 1

Unexpected malfunction due to loss of power, compressed air, coolant, etc.



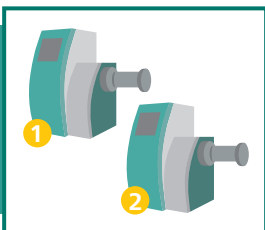
The mill is installed and the production line is in operation. The operator in charge is overseeing other production lines and is in another part of the building.



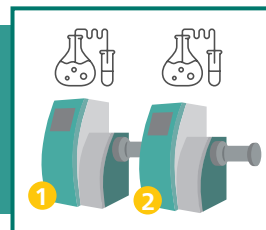
An unexpected malfunction occurs, so that for example, the supply of power, compressed air or coolant is interrupted.

## APPLICATION EXAMPLE - CASE 2

Scheduled sampling



The mill is installed and the production line is in operation. The operator in charge is overseeing other production lines.

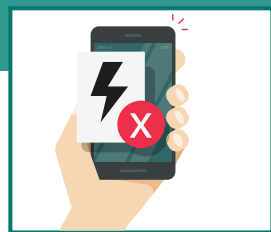
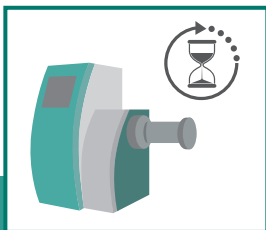


In order to control the quality of the production batches, appropriate samples must be taken.

FOR ADDITIONAL  
APPLICATION  
EXAMPLES:

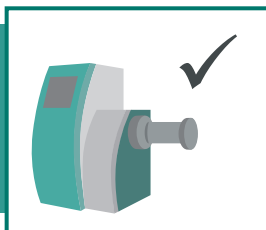


The operator doesn't notice the shutdown and thus, the shutdown of the mill.



The operator is notified via the *NOTIFY* app that the mill is no longer receiving power.

After 4 hours, the operator checks his production process and can now remedy the malfunction.



The operator can remedy the malfunction and can restart the production process immediately.

The operator restarts his process. There has been a production delay of 4 hours. In the worst case, even the quality of the batch has been reduced.



There is no delay in the production process. The quality of the batch is also not affected.

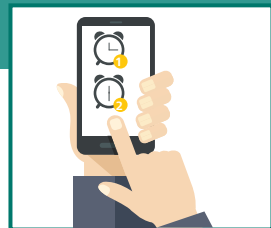
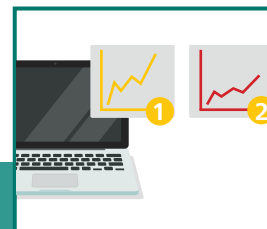
The operator must take samples at various defined times.



To do this, he sets the times on different clocks. It is difficult for the operator to see all the times at a glance and to take the samples on time.



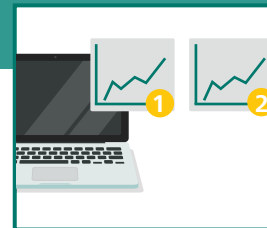
The sampling is delayed and a reproducible analysis of the samples is not possible.




All machines are networked with *NOTIFY* so that the operator can store times for each mill in the app as an alert.



The operator receives the message punctually on his device that the sample must now be taken from machine X.



The samples are submitted to the laboratory for analysis in good time so that reproducible results are available.



The NETZSCH Group is an owner-managed, international technology company with headquarters in Germany. The Business Units Analyzing & Testing, Grinding & Dispersing and Pumps & Systems represent customized solutions at the highest level. More than 3,800 employees in 36 countries and a worldwide sales and service network ensure customer proximity and competent service.

Our performance standards are high. We promise our customers Proven Excellence – exceptional performance in everything we do, proven time and again since 1873.

## Proven Excellence. ■

### Business Unit Grinding & Dispersing – The World's Leading Grinding Technology

NETZSCH-Feinmahltechnik | Germany  
NETZSCH Trockenmahltechnik | Germany  
NETZSCH Vakumix | Germany  
NETZSCH Lohnmahltechnik | Germany  
NETZSCH Mastermix | Great Britain  
NETZSCH FRÈRES | France  
NETZSCH España | Spain  
ECUTEK | Spain

NETZSCH Machinery and Instruments | China  
NETZSCH India Grinding & Dispersing | India  
NETZSCH Tula | Russia  
NETZSCH Makine Sanayi ve Ticaret | Turkey  
NETZSCH Korea | Korea  
NETZSCH Premier Technologies | USA  
NETZSCH Equipamentos de Moagem | Brazil

NETZSCH-Feinmahltechnik GmbH  
Sedanstraße 70  
95100 Selb  
Germany  
Tel.: +49 9287 797 0  
Fax: +49 9287 797 149  
info.nft@netzsch.com

**NETZSCH**®

[www.netzsch.com](http://www.netzsch.com)