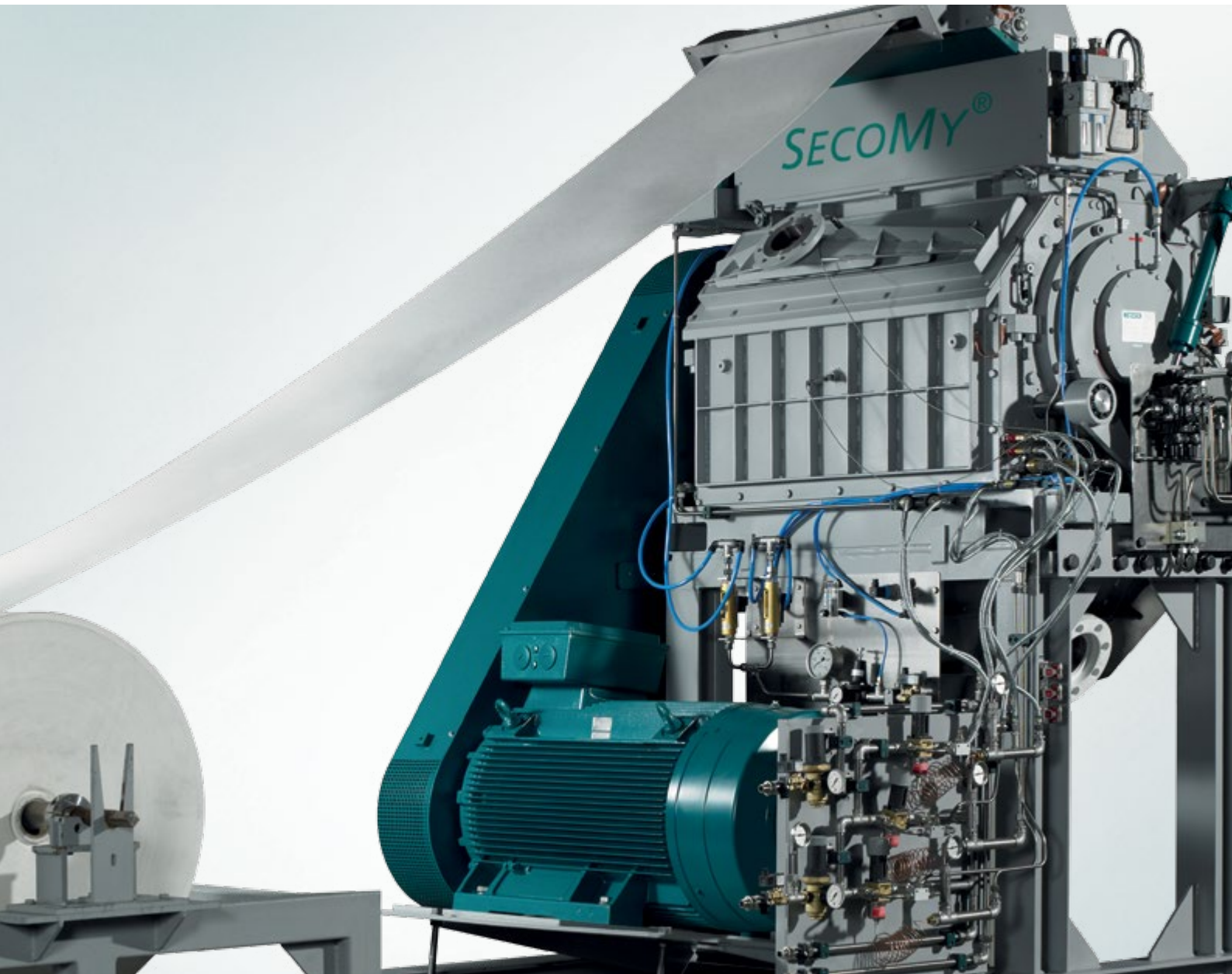


NETZSCH

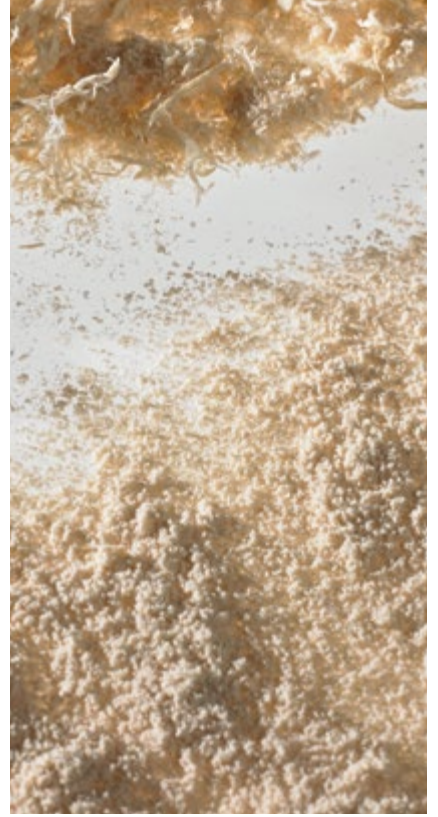
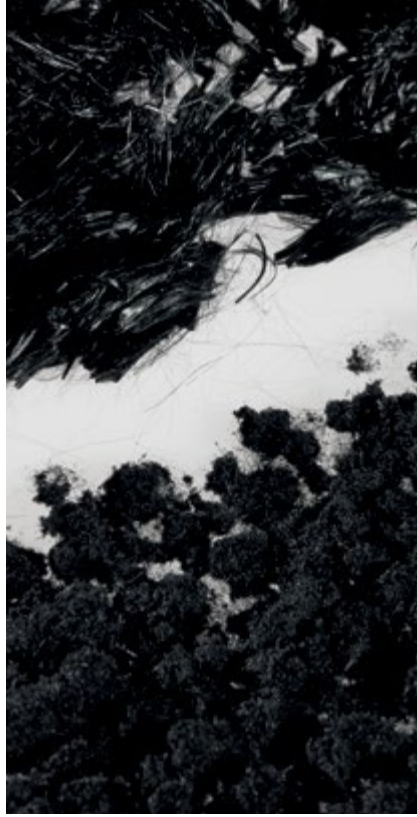
Proven Excellence.



NETZSCH Fine Cutting Mill *SECOMY*[®]

High-Performance Pulverization

Business Unit
GRINDING & DISPERSING



A new definition of **FINE-CUTTING!**

NETZSCH Cutting Mills of type *SECOMY*[®] are high speed cutting mills with high-frequency cutting strokes for the ultrafine-grinding of cuttable materials. Application areas include materials that must be finely ground by means of cutting action. These include fibrous, ductile, viscoplastic or temperature-sensitive materials, as well as materials for which good flowability, high density and gentle grinding are required.

The feed material is fed into the cutting chamber either by gravity or via a nip roll system. The material is cut repeatedly between the rotor- and stator knives working against each other in a particular cutting sequence with a defined gap, until the material can pass through a special screen insert which closes off the bottom of the cutting chamber. The rotor is supported by precision bearings, which are separated from the chamber by special seals.

The product is discharged pneumatically via a suction trough. This simultaneously cools the product and the cutting chamber. Two nip-roll systems can be operated simultaneously, so the production of product mixtures is also possible!

Focus on its Benefits for your Company

- Lower energy costs
- Highest possible flexibility
- Best product quality
- High throughput capacity
- Low product temperatures
- Highest availability
- High bulk densities
- Narrow particle size distribution
- Possibility of blending products
- Simple replacement of mill
- Increase of productivity
- Small amount of space required
- Short waiting times
- Existing components can be used



SecoMy® 160 with nip-roll system

Technical data

	<i>SECO</i> MY® 37	<i>SECO</i> MY® 160	<i>SECO</i> MY® 200
Drive power [kW]	37	160	200
max. speed [min ⁻¹]	1 060	1 060	1 060
Feeding width [mm]	220	990	990
Air volume (max.) [m ³ h ⁻¹]	1 080	4 200	4 200
Weight (approx.) [kg]	2 200	7 800	8 000
Basic area [m ²]	1 x 2	1,8 x 2,5	1,8 x 2,5

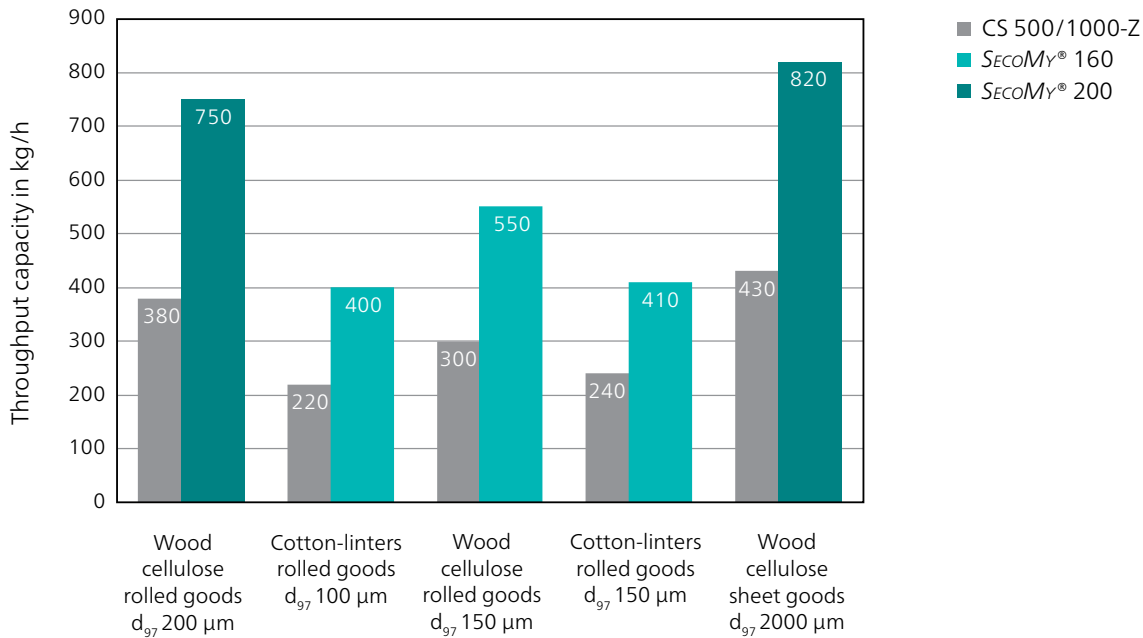


*SECO*MY® 200 with two nip-roll systems

Exchange of the Mill

The new *SECO*MY® machine can easily replace an existing cutting mill of the old type CS 500/1000-Z. It has identical space requirements and can increase productivity of the plant with a little additional time and effort. Compared to the previous model, performance increases of up to 100% are possible. Only the operating media must be adapted, if necessary.

Comparison of Practical Examples



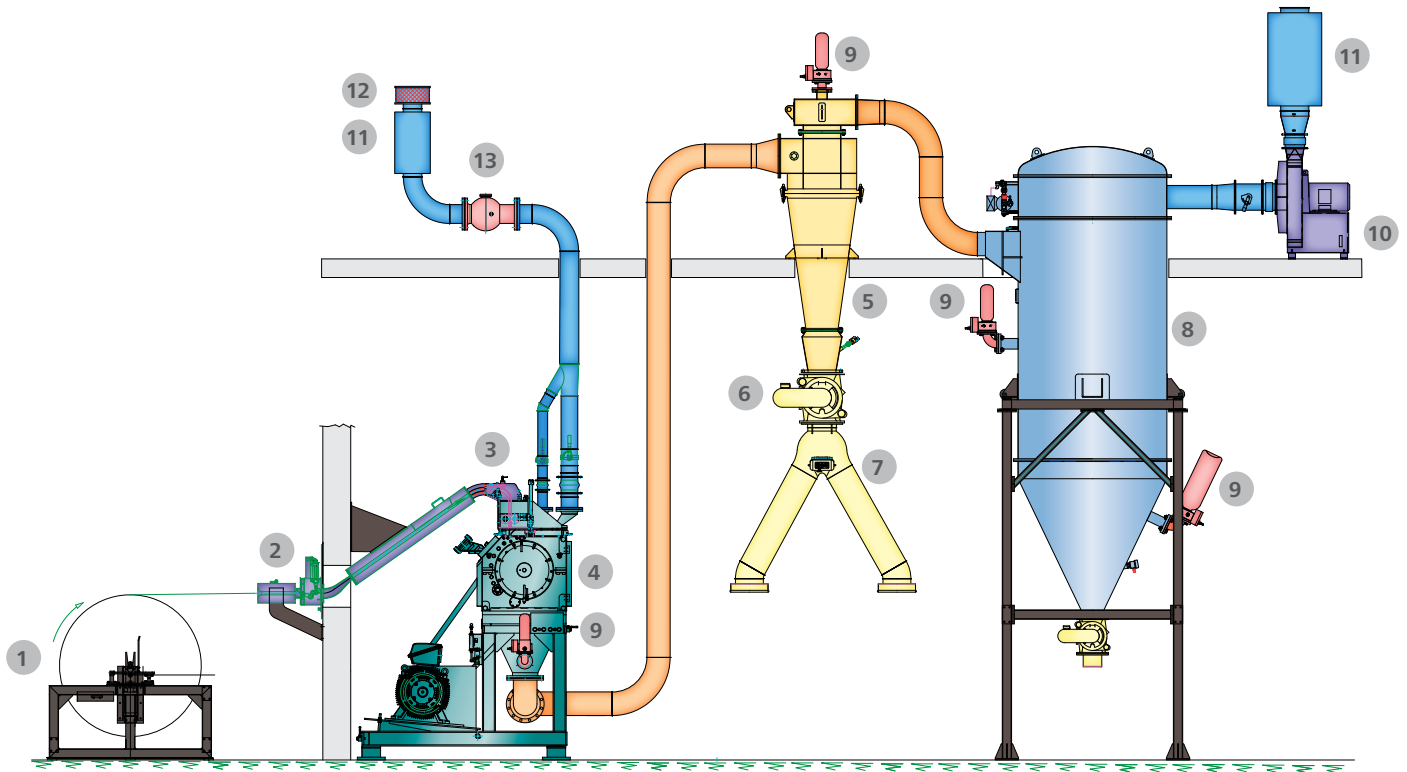
Constructional Characteristics

- Optimized variable knife design
- Optional pressure shock resistant execution
- Optional gas-tight execution
- Adjustable grinding air flow
- Can be cooled with air- and water
- Optimized thermal system
- High air throughput
- Outer adjustment of rotary- and fixed knives
- Minimum number of wear parts
- Extremely easy screen- and knife changing
- Wear protection possible
- Maximum free aperture area of screen



SecoMY® 160

SECOMy® Plant



- 1 Unwinding Station
- 2 Noise protection roll system
- 3 Nip roll system
- 4 Fine-cutting mill *SECOMy*®
- 5 Cyclone
- 6 Rotary airlock valve
- 7 Two-way valve for bagging
- 8 Dust filter
- 9 Fire extinguisher
- 10 Radial ventilator
- 11 Noise protection
- 12 Suction filter
- 13 Explosion protection valve


ATEX conformity

EU-TYPE EXAMINATION CERTIFICATE
acc. to directive 2014/34/EU

II 1/2 D Ex h IIC T110 °C Da/Db
IBExU11ATEX1116X

For the assembly as a complete grinding plant, in addition to nip-roll systems, suction systems with dust filter and noise-protection, additional explosion protection components are also available. Inerting is possible with a gas-tight construction design. This design ensures an ATEX-compliant installation for potentially dust-explosive products

Example of Product	Feed Shape	Fineness	Machine Size	Throughput [kg/h]
Used paper	Flakes < 30 mm	$d_{97} = 150 \mu\text{m}$	SECOMY® 200	450
Used paper	Flakes < 30 mm	$d_{97} = 500 \mu\text{m}$	SECOMY® 200	720 - 900
Aramid fibers	Cuttings < 30 mm	< 1,5 mm	SECOMY® 200	270 - 360
Aramid fibers	Cuttings 100 x 100 mm	$d_{97} = 315 \mu\text{m}$	SECOMY® 37	28 - 36
Carbon fibers	Cut goods < 50 mm	$d_{97} = 100 \mu\text{m}$	SECOMY® 200	360 - 540
Wood fibers	Fibrous pellets < 200 mm	< 500 μm	SECOMY® 200	1400 - 1800
Collagen	Beads/lumps	$d_{95} = 250 \mu\text{m}$	SECOMY® 37	40
Coffee	Whole beans	< 1,6 mm	SECOMY® 37	140 - 150
Maize straw	Stalks	< 1,5 mm	SECOMY® 37	90 - 130
PES film	Layers of film	< 4 mm	SECOMY® 200	1400
Foam material	Cutting waste	< 6 mm	SECOMY® 200	1000
Polyamide-textiles	Flakes	$d_{99} = 250 \mu\text{m}$	SECOMY® 200	350 - 450
UHMWPE	Turning-/milling shavings	< 500 μm	SECOMY® 200	900
PET-fibers	Pre-cut (Shredder)	$d_{90} = 90 \mu\text{m}$	SECOMY® 160	240 - 260
Wheatmeal	Meal	$d_{99} = 500 \mu\text{m}$	SECOMY® 37	140 - 160
Cellulose	Sheet goods	< 25 mm	SECOMY® 160	2500
Cellulose	Sheet goods	< 6 mm	SECOMY® 200	1400 - 2100
Cellulose	Sheet goods	< 2 mm	SECOMY® 200	690
Cellulose	Sheet goods	$d_{97} = 200 \mu\text{m}$	SECOMY® 160	320 - 380
Cellulose	Granules	$d_{97} = 200 \mu\text{m}$	SECOMY® 160	260 - 290
Cellulose (wood)	Rolls	$d_{97} = 250 \mu\text{m}$	SECOMY® 37	110 - 175
Cellulose (wood)	Rolls	$d_{97} = 100 \mu\text{m}$	SECOMY® 200	390 - 520
Cellulose (wood)	Rolls	$d_{97} = 200 \mu\text{m}$	SECOMY® 200	500 - 600
Cellulose (wood)	Rolls	$d_{90} = 350 \mu\text{m}$	SECOMY® 200	630 - 920
Cellulose (wood)	Flakes < 15 mm	$d_{90} = 250 \mu\text{m}$	SECOMY® 200	570 - 800
Cellulose (Linters)	Rolls	$d_{90} = 100 \mu\text{m}$	SECOMY® 200	340 - 480
Cellulose (Linters)	Rolls	$d_{90} = 200 \mu\text{m}$	SECOMY® 200	720 - 880
Cellulose (Linters)	Rolls	$d_{90} = 350 \mu\text{m}$	SECOMY® 200	540 - 750
Cellulose (Linters)	Pre-cut from bales	$d_{90} = 200 \mu\text{m}$	SECOMY® 200	320 - 450
Cellulose-Derivate	Granules < 8 mm	< 500 μm	SECOMY® 200	540 - 900



The NETZSCH Group is an owner-managed, international technology company with headquarters in Germany. The Business Units Analyzing & Testing, Grinding & Dispersing and Pumps & Systems represent customized solutions at the highest level. More than 4,000 employees in 36 countries and a worldwide sales and service network ensure customer proximity and competent service.

Our performance standards are high. We promise our customers Proven Excellence – exceptional performance in everything we do, proven time and again since 1873.

Proven Excellence. ■

Business Unit Grinding & Dispersing – The World's Leading Grinding Technology

NETZSCH-Feinmahltechnik – Germany
NETZSCH Trockenmahltechnik – Germany
NETZSCH Vakumix – Germany
NETZSCH Lohnmahltechnik – Germany
NETZSCH Mastermix – Great Britain
NETZSCH FRÈRES – France
NETZSCH España – Spain
ECUTEK – Spain

NETZSCH Machinery and Instruments – China
NETZSCH India Grinding & Dispersing – India
NETZSCH Tula – Russia
NETZSCH Makine Sanayi ve Ticaret – Turkey
NETZSCH Korea – Korea
NETZSCH Premier Technologies – USA
NETZSCH Equipamentos de Moagem – Brazil

NETZSCH Trockenmahltechnik GmbH
Rodenbacher Chaussee 1
63457 Hanau
Germany
Tel.: +49 6181 506 01
Fax: +49 6181 571 270
info.ntt@netzsch.com

NETZSCH®

www.netzsch.com