



What can you expect from us?

- Transparent and open consultation
- Professional and quick solution for your product
- State-of-the-art machines and systems
- Metal-free and low-contamination material designs
- ATEX certified production
- Competent, comprehensive and global support from a single source



What benefits do you have from our service?

- No capital commitment
- No investment of your own
- Flexible and with a calculable risk through the market-introduction phase
- Planning reliability for your decision-making processes
- Bridging of capacity bottlenecks
- Product development support



Sustainability

- EcoVadis "silver"
- ISO 14001 implementation in 2022
- ISO 50061 since 2010

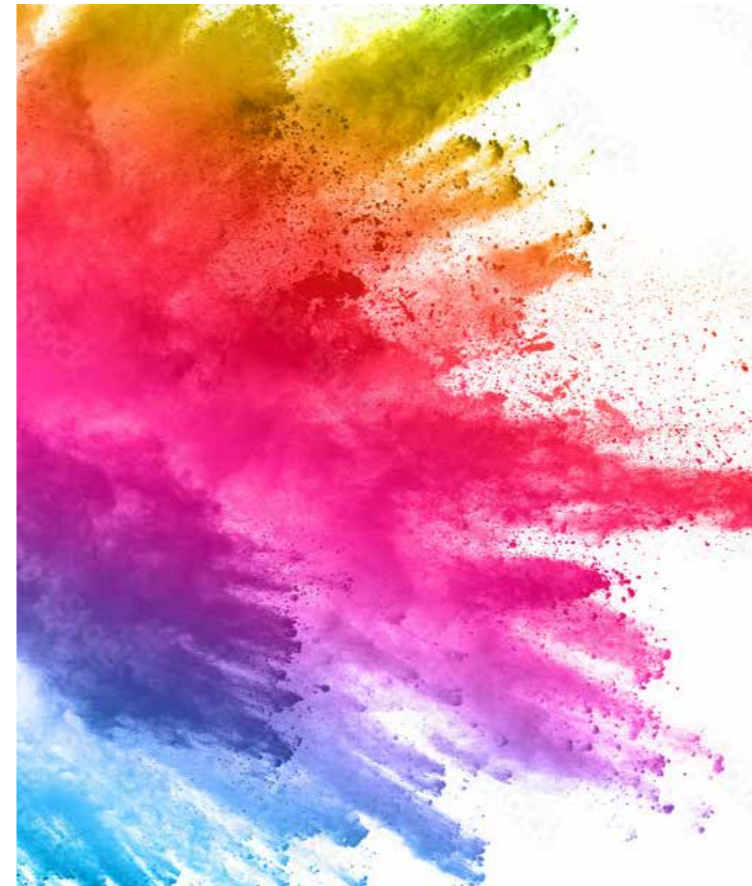
Business Unit Grinding & Dispersing – The World's Leading Grinding Technology

The NETZSCH Group is an owner-managed, international technology company with headquarters in Germany. The Business Units Analyzing & Testing, Grinding & Dispersing and Pumps & Systems represent customized solutions at the highest level. More than 4000 employees in 36 countries and a worldwide sales and service network ensure customer proximity and competent service.

Our performance standards are high. We promise our customers Proven Excellence – exceptional performance in everything we do, proven time and again since 1873.

Proven Excellence.

NETZSCH Lohmahltechnik GmbH
Max-Fischer-Straße | D-86399 Bobingen
Tel.: +49 8234 966 150 | Fax: +49 8234 966 1570
info.nlt@netzsch.com | www.grinding.netzsch.com

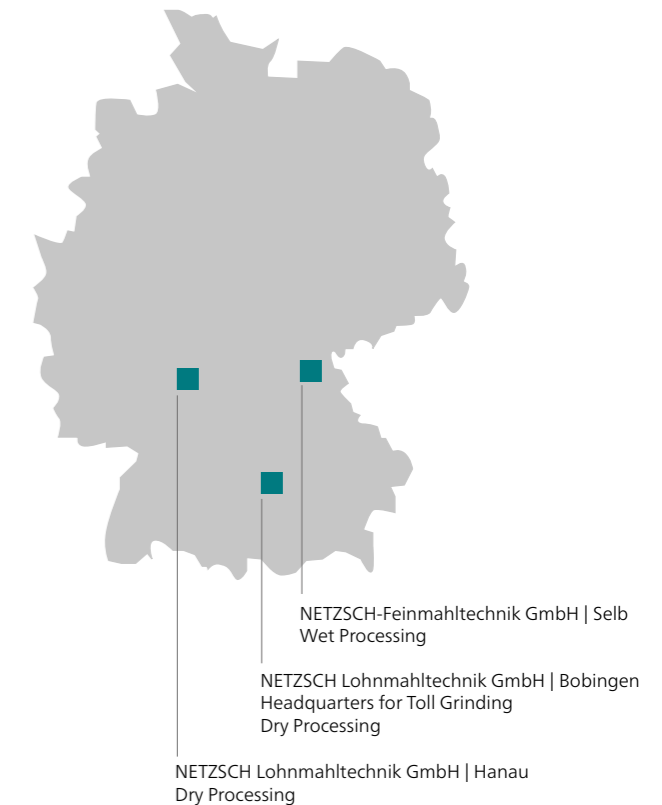


Dry and Wet Grinding as a Service

NETZSCH Lohmahltechnik

Toll Grinding at NETZSCH

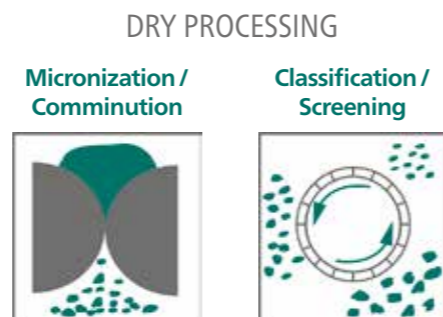
NETZSCH is the only supplier in the service sector that can offer the entire range of applications from dry to wet grinding including dispersing from one source.



Your product is in the best hands with us

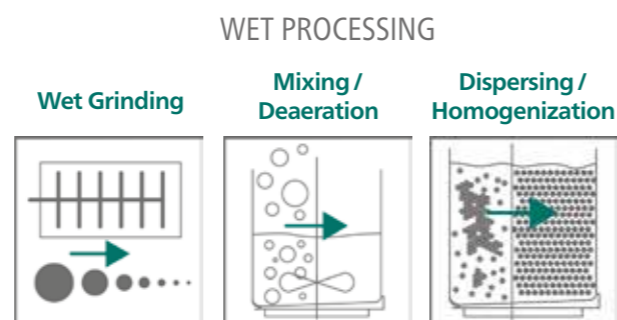
Dry Processing at NETZSCH

Profit from our many years of experience as a provider of dry processing services. We offer you comprehensive expertise from a single source! Whether it's demanding grinding and classifying tasks or specialties such as cryogenic grinding, or even packaging and labeling – you've come to the right place.



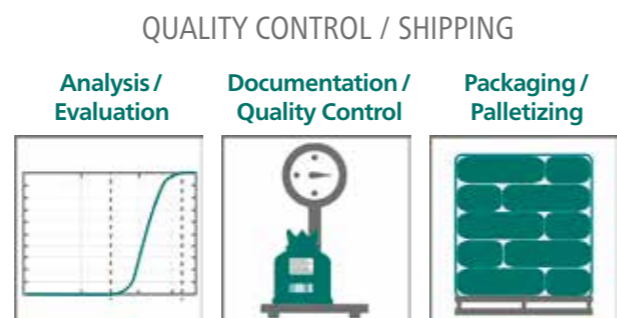
Wet Processing at NETZSCH

In the area of wet processing, we offer toll grinding services for products from diverse sectors of industry. Aqueous or solvent-based suspensions, highly-viscous pastes or emulsions, the introduction of solids in liquids – we're in the position to fulfill virtually any requirement in wet processing for you.



Quality Control & Shipping

Our facilities, equipped with state-of-the-art systems and analysis methods, provide the optimum conditions for successful tests and development. Together with you, we then implement these on a production scale using our well-diversified array of machines, giving attention to the highest quality in all procedures. Our processes are certified in accordance with DIN/ISO 9001:2008.



Further information on toll grinding can be found here: 